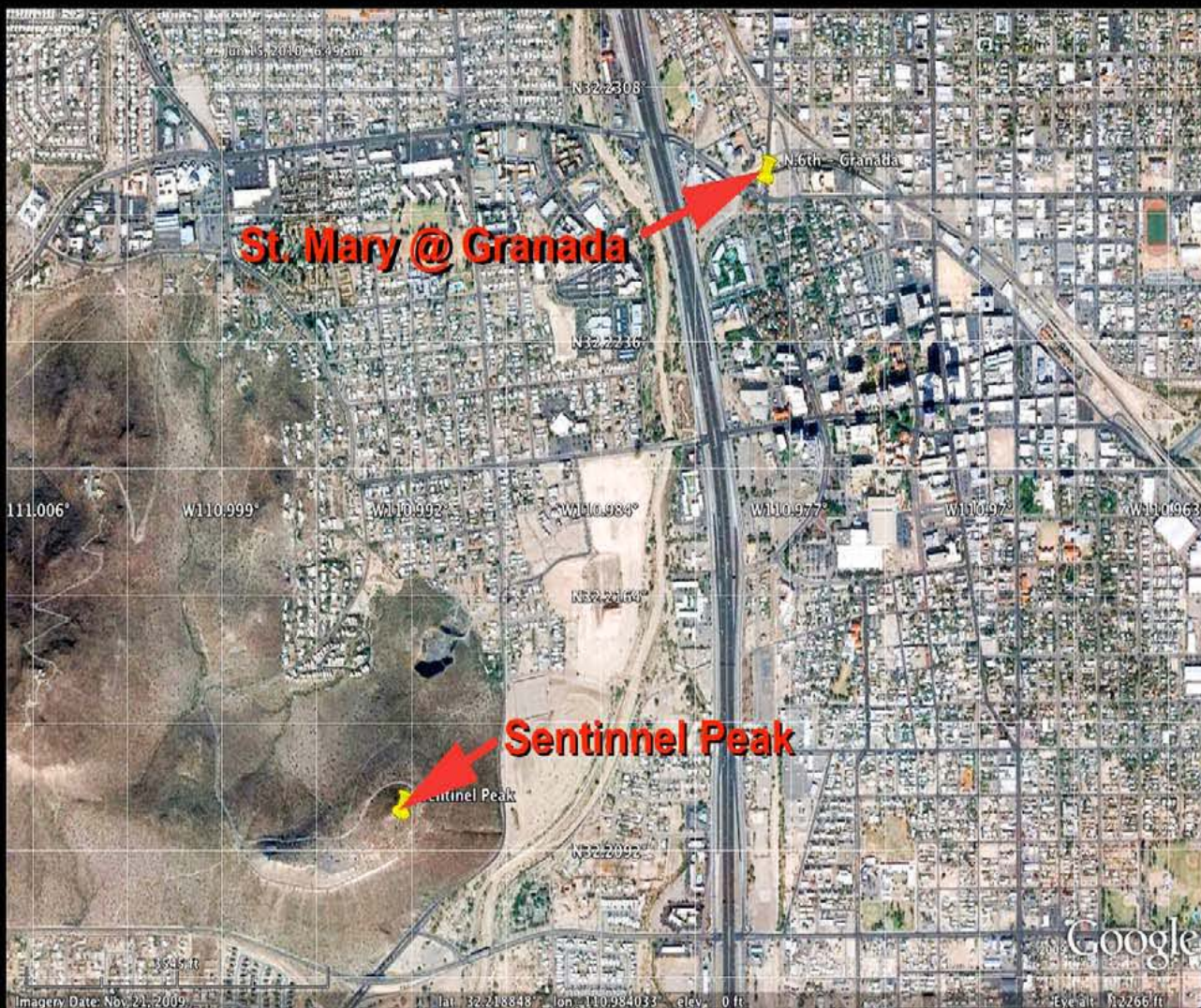


# Public Art – Living Lenses

## INSPIRATION

All these have inspired us to come up with an idea to create an artwork that can express our intimate yet intangible relationship with Space and Time.

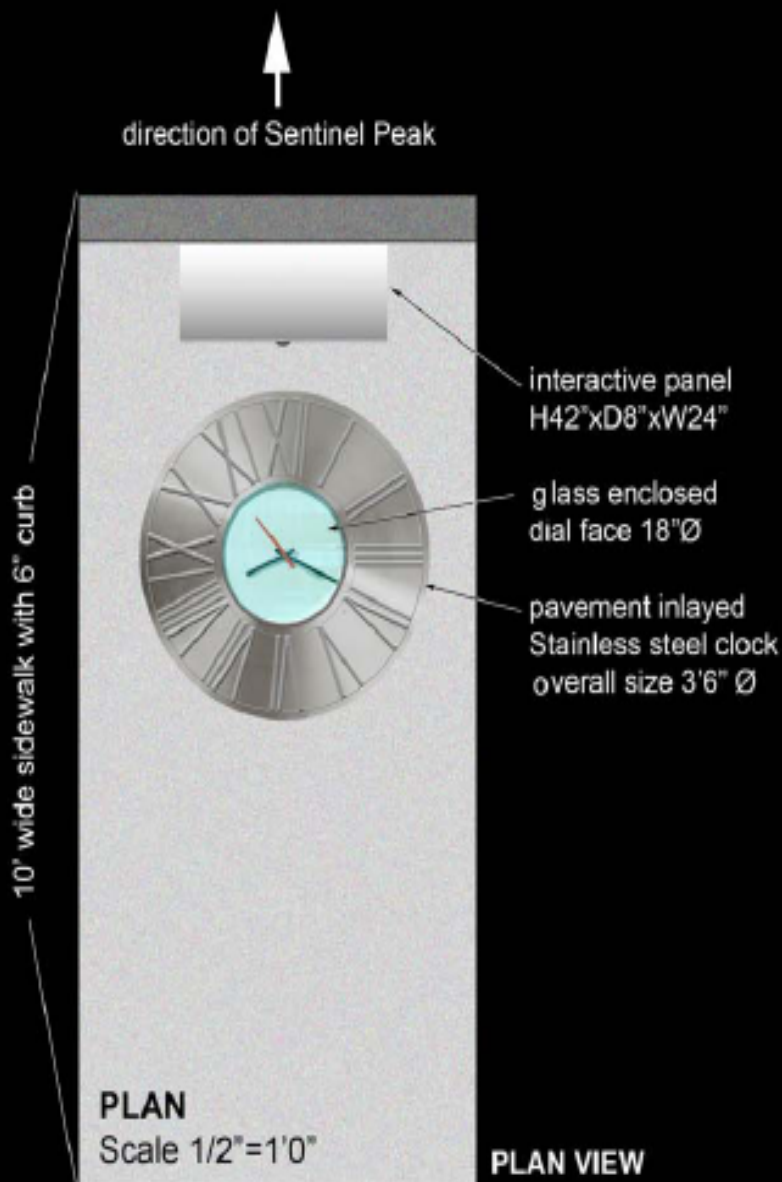


**St. Mary @ Granada**

**Sentinel Peak**

Google

# SITE A Art Element - Interactive Station



## TRAVELING THROUGH STILLNESS

### Welcome On Board Spaceship Earth

We are born traveling in unimaginable speed down a most convoluted astronomical trajectory. This is our default 'stillness' of being in this universe, as far as our senses can tell.

Now we invite you to push the button and watch for the twinkle of light just below the 'A' on Sentinel Peak. Each lapse between twinkles will signal that you have traveled a distance from here to there, 1.39 miles, by the courtesy of our Earth's rotation.

By acknowledging this first of a nested set of inertial frames that we live in, we invite you to consider how we can be constantly traveling through stillness, way beyond Spaceship Earth, yet all without the slightest sensation of motion. We wish you a pleasant journey!

### LIVING LENSES

*Louise Bertelsen & Po Shu Wang*



# SITE B Art Element - PV Light Signal Station

